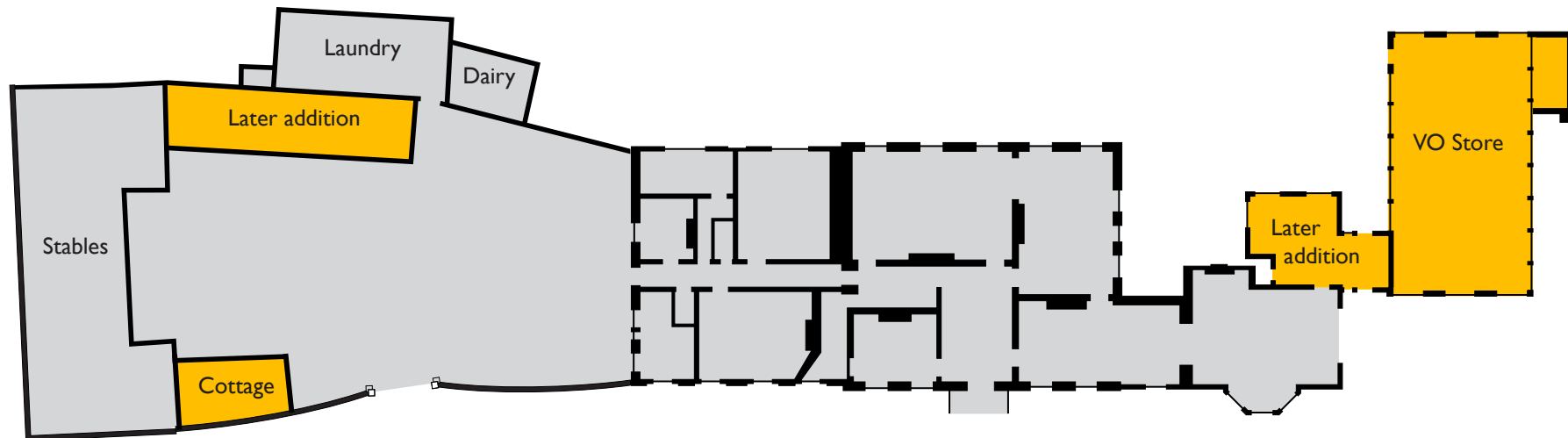


HOW IT COULD BE



Certain elements could be removed:

Some later outbuildings could be demolished, or considered for demolition, so that the Mount is more recognisable as the young Charles Darwin would have seen it.



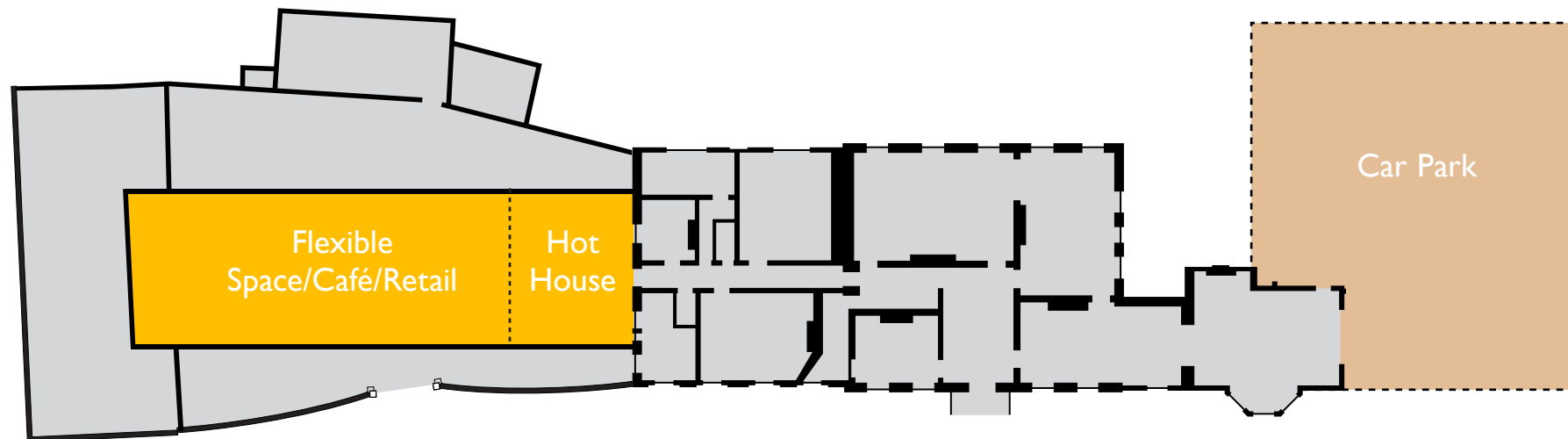
HOW IT COULD BE



Certain elements could be added:

A discreet car park built to the far end of the site

A new 'hot house' conservatory and multi functional visitor centre connecting the servant's quarters to the stable block complex, including café, kitchen, shop, temporary exhibition, education, conference, toilets and office facilities

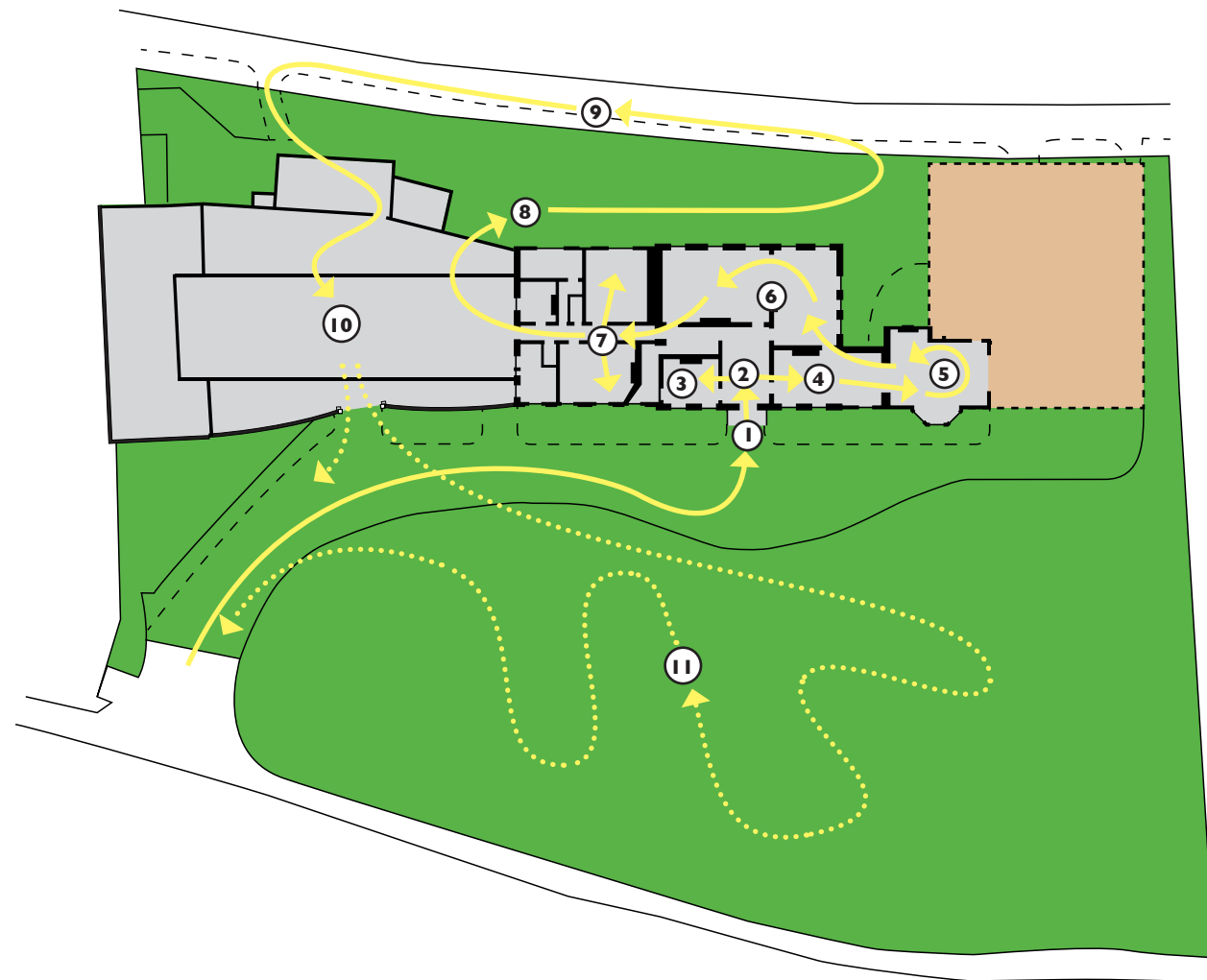


HOW IT COULD BE



An adventurous journey can be devised with distributed storytelling seeded throughout in eleven parts:

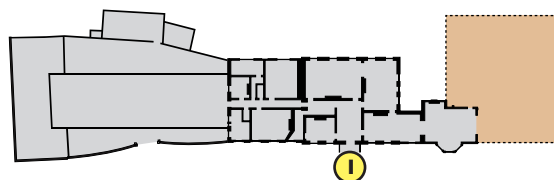
1. A grand entrance
2. Welcome guests
3. Please wait here
4. Formative Years
5. Food for thought
6. The inquisitive child
7. A liberal household
8. The great outdoors
9. The Doctor's Walk
10. Hot house and visitor centre
11. Dr Darwin's Garden



I - A GRAND ENTRANCE



- The drive approach
- Anticipation builds
- A hidden place
- Secluded and peaceful
- Fascinating trees
- A Georgian house
- Portico entrance
- Sense of arrival
- In 1809...
- The story begins...



2 - WELCOME GUESTS



- Entrance hall
- Botanical friezes
- Welcome to the birthplace of Charles Darwin
- Family portraits
- 1809 setting
- Stairs above – sounds of happy family life emanate
- Grandfather clock ticks
- A barometer to tap
- Christening invitation – date of CD birth:
 - The arrival of our son
- The Times newspaper world events:
 - Trafalgar repercussions
 - Trade in slavery abolished
 - Luddite problems...
- Boots, coats and walking sticks

