

NURTURE AND NATURE

A VISION FOR DARWIN'S BIRTHPLACE



17 November 2006

© Furneaux Stewart Design Limited
Bloxham Mill Barford Road Bloxham
Banbury OX15 4FF

Contact: Laurie Stewart
Tel: 01295 724 160 Mobile: 07917 260 202
e-mail: laurie.stewart@furneauxstewart.com



Build upon:

- Site specific story
- Actual birthplace and family home

Deal with:

- Realities of a shrunken estate
- Time gap of 200 years

Use approach which:

- Brings Darwin the child to life
- Contextualises the period
- Makes Darwin's story as relevant now as it was then

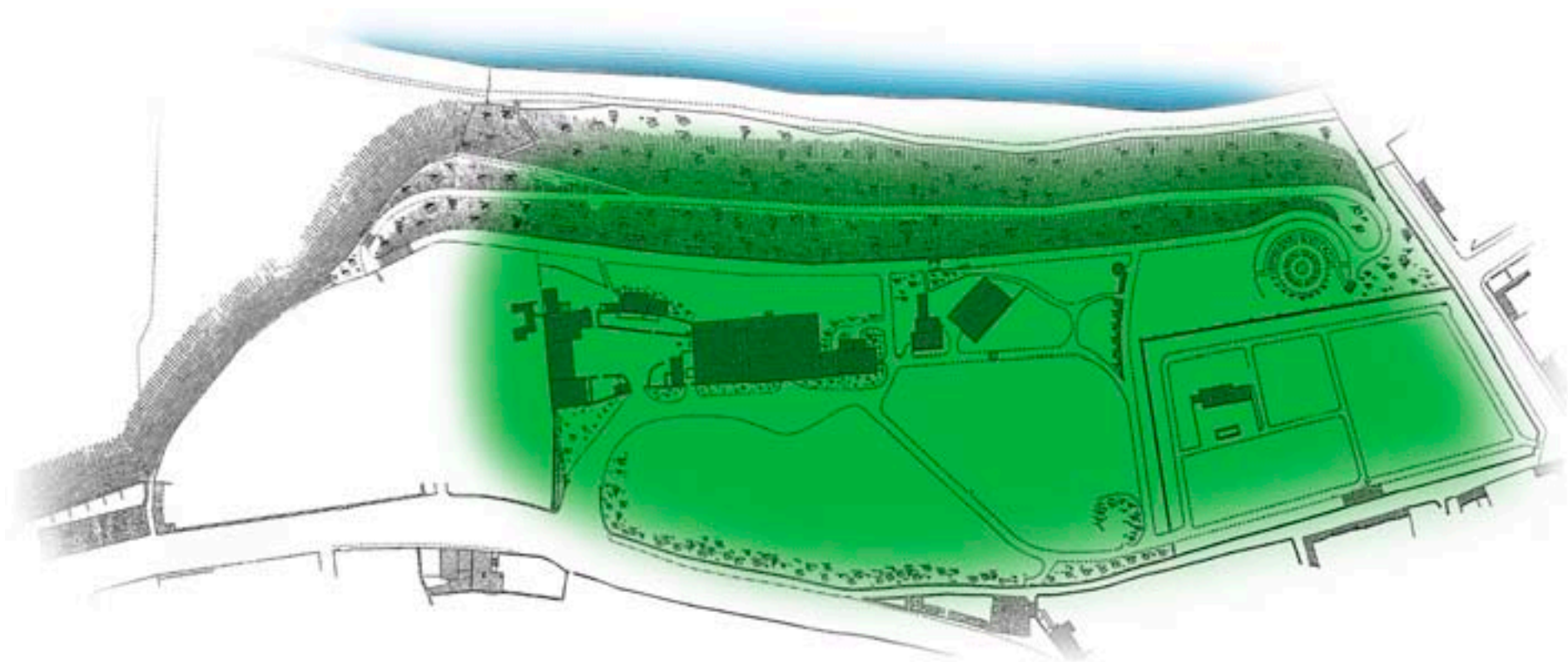
Thematically:

- Darwin born here
- Darwin nurtured here
- Darwin discovered nature here
- Nurture and nature
- The origins of a genius

HOW IT WAS



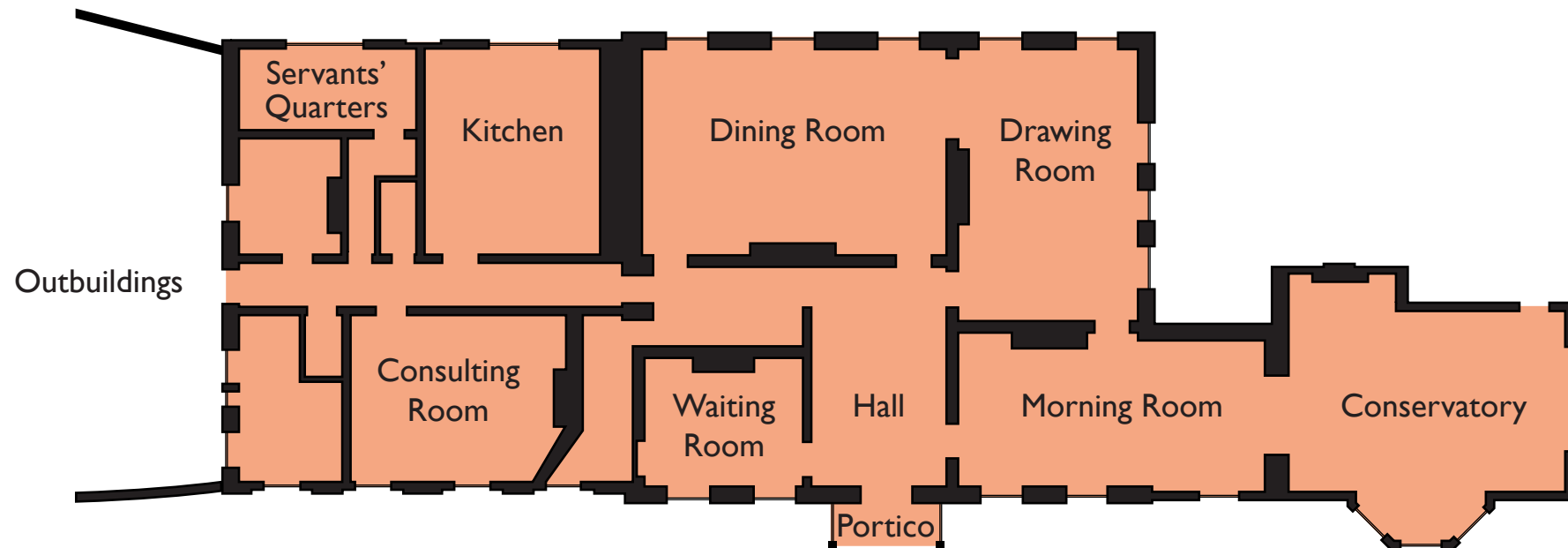
- At the centre of a small estate/farm
- House built in 1800 to Georgian design
- The house of a gentleman
- A grand entrance, impressing visitors
- Family home
- Self sufficient
- Formal gardens
- River banks and woods
- Open farmland
- The hills beckoning beyond
- Space to think, adventure and explore
- A great place to grow up



HOW IT WAS



- Early 19th century formal
- An organised layout:
 - Hall
 - Waiting room
 - Morning room
 - Drawing room
 - Dining room
 - Consulting room
 - Kitchens and servants quarters
- Household staff
- Run like clockwork
- Regular routines
- But space and time for a boy to think
- With an inquisitive mind and boundless imagination



HOW IT IS NOW



- It has shrunk dramatically
 - But still retains a sense of place
- And much still remains:
 - The house and outbuildings
 - The house interiors
 - Some garden features
- Some elements may need recreating:
 - Early 19th century period context
 - A county town doctor's house
 - The garden re-established
 - The stable block restored
- And some might be regained
 - Top terrace and the Doctor's walk
 - The views to the river
 - The land that leads down to it
 - The views beyond
- Some could be added:
 - Café and shop
 - Conservatory/hothouse

